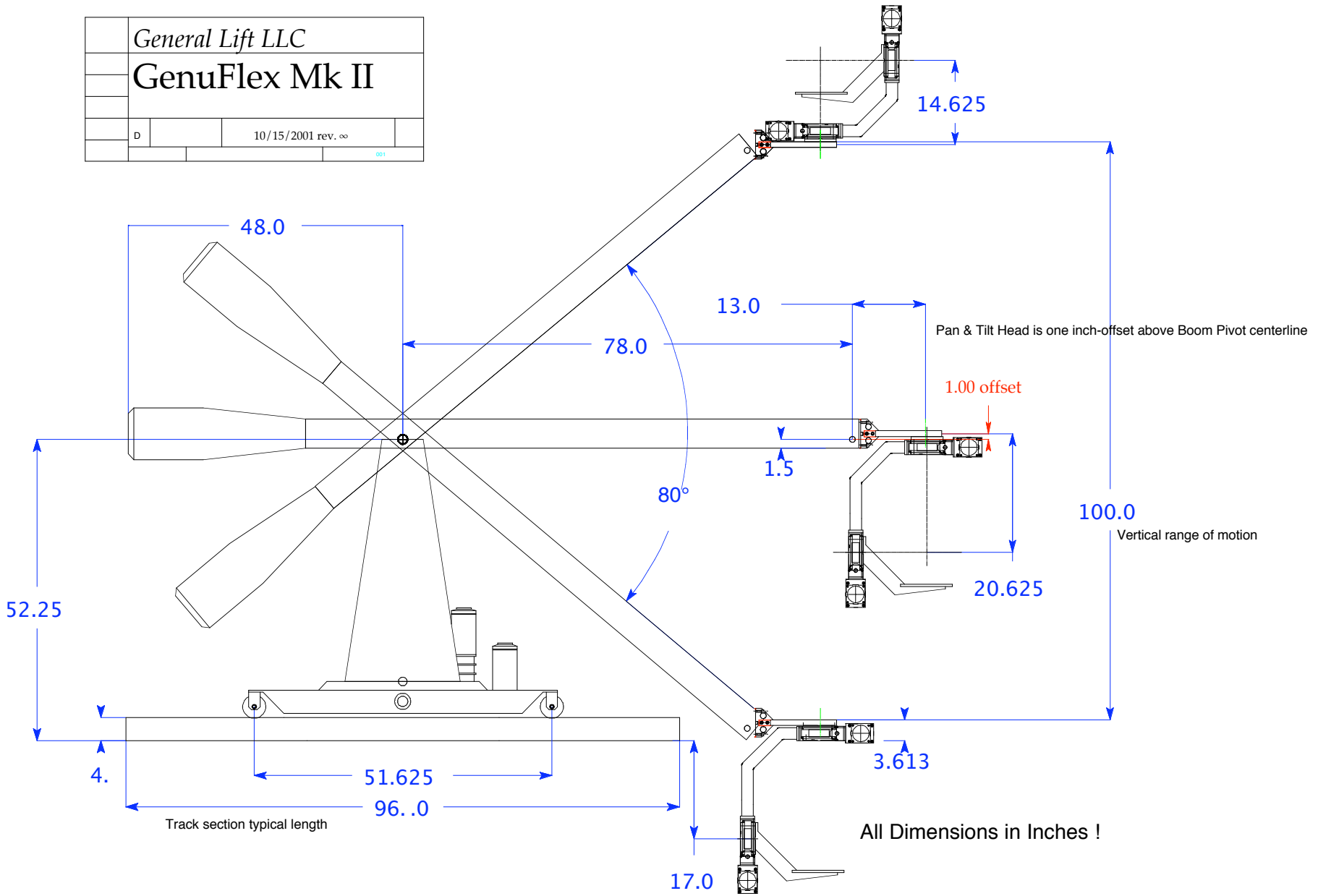
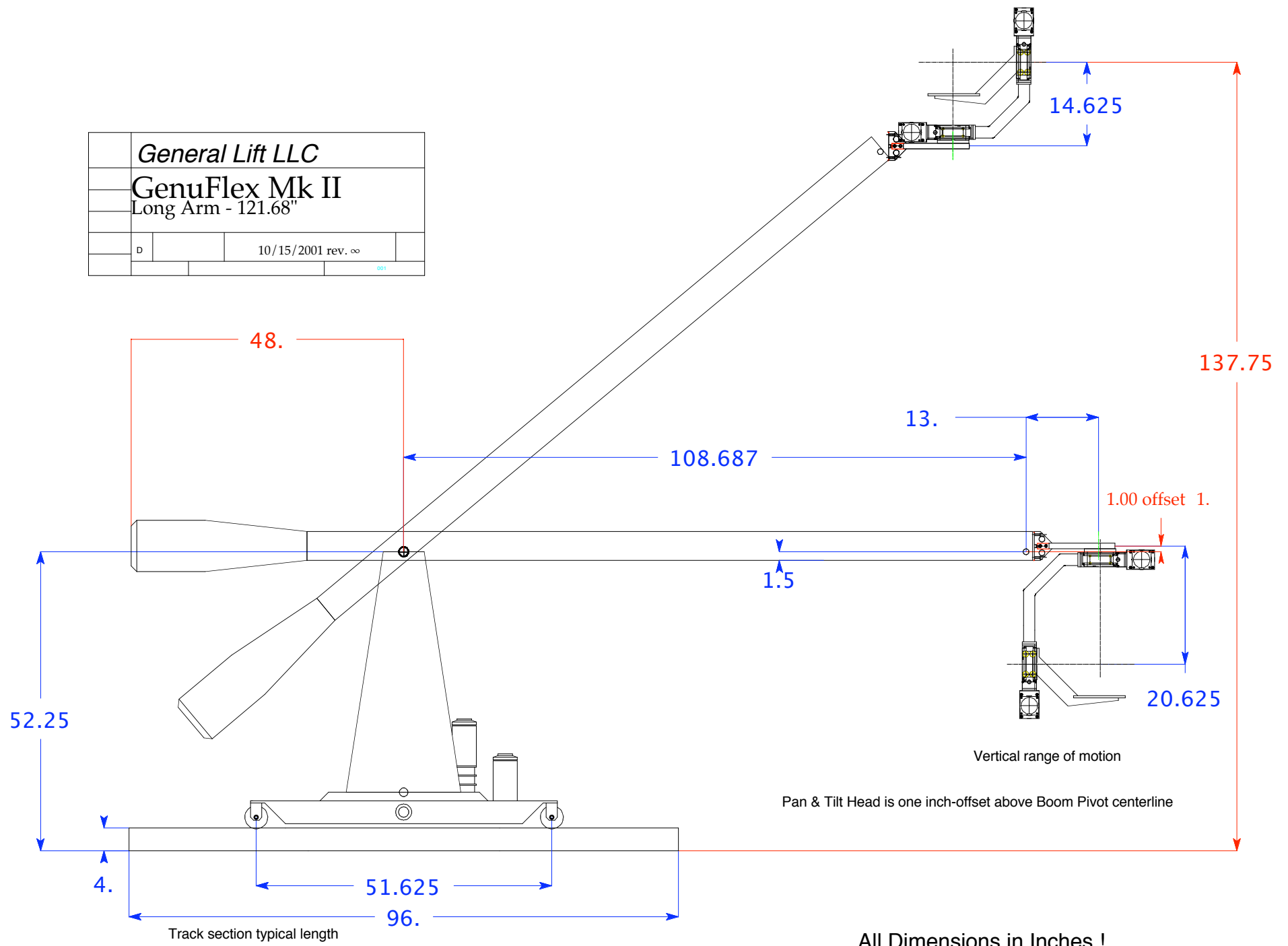


General Lift LLC	
GenuFlex Mk II	
D	10/15/2001 rev. ∞
	001

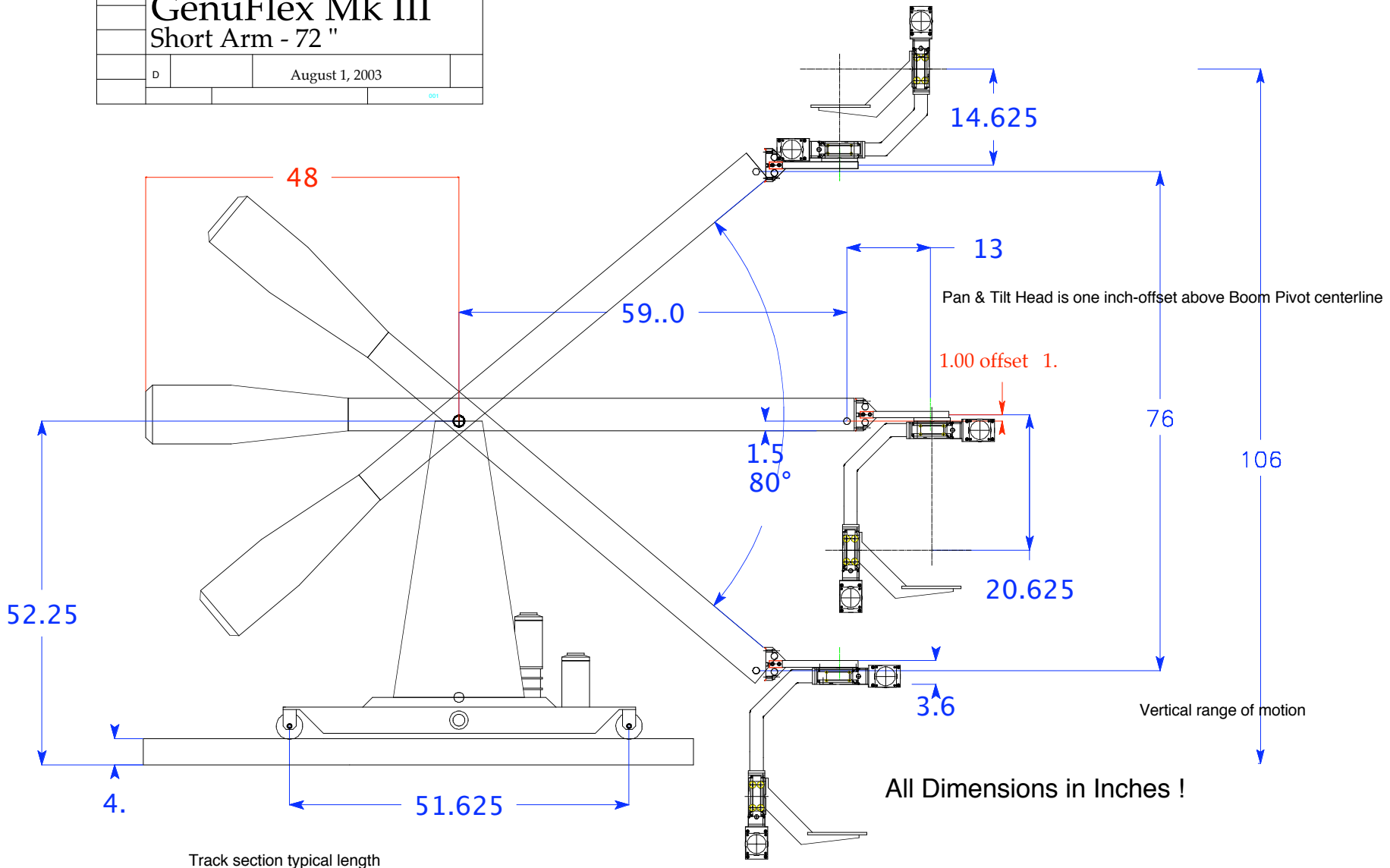


<i>General Lift LLC</i>			
GenuFlex Mk II			
Long Arm - 121.68"			
D		10/15/2001 rev. ∞	
			001



All Dimensions in Inches !

General Lift LLC			
GenuFlex Mk III			
Short Arm - 72 "			
D		August 1, 2003	
			001



General Mk II

Speed - JetRail/Genuflex

Track	excess 7 ft per second
Boom Swing	90° in 3 seconds
Boom Elevation	5 ft in 3 seconds
Camera Pan	90° in 1 sec. or less
Camera Tilt	90° in 1 sec. or less
Camera Roll	90° in 1 sec. or less

Genuflex Mk II with 3 different arms

Boom arm the distant from the center of rotation to camera film plane at nodal

Short arm	72 inches
Standard arm	91 Inches
Long arm	121 Inches

Boom arm is + / - 40 degrees off level

Short arm	with 76 inches of travel
Standard arm	with 100 inches of travel
Long arm	with 142 inches of travel

Center of boom arm rotation from floor to center is 52.25 inches.

Degrees Of Motion

Swing	360°+
Pan	360°+
Tilt	360°+
Roll	360°+

System weights

Mk II Body	600 lbs
Mk II Long Arm	131 lbs
Mk II Standard Arm	76 lbs
Mk II Short Arm	65 lbs
RotoFlex Pan & Tilt Head	45 lbs
RotoFlex Pan, Tilt & Roll Head	65 lbs